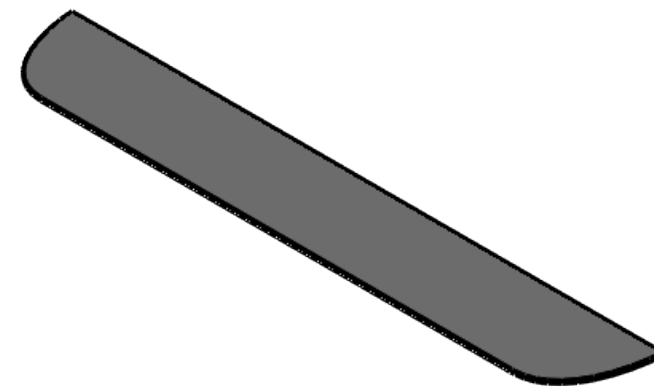
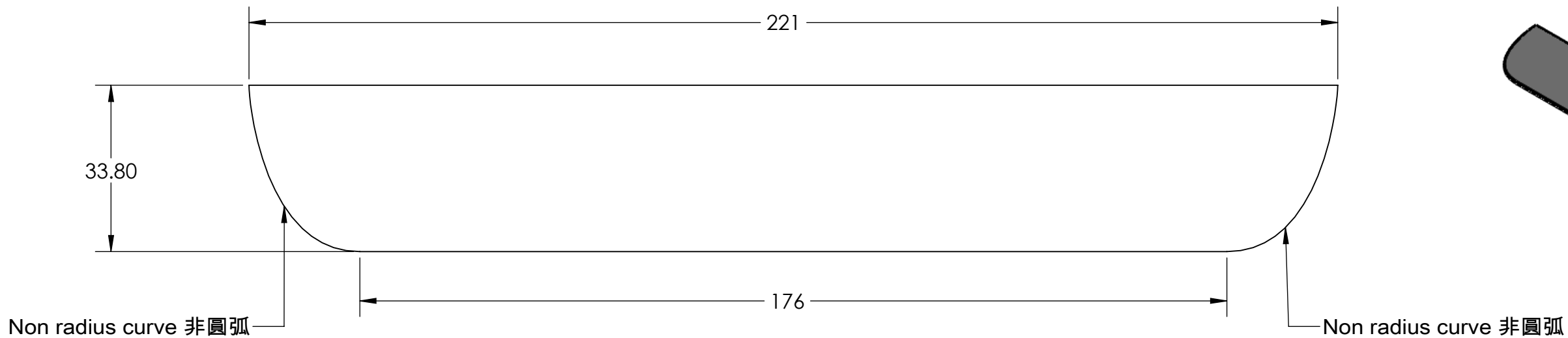
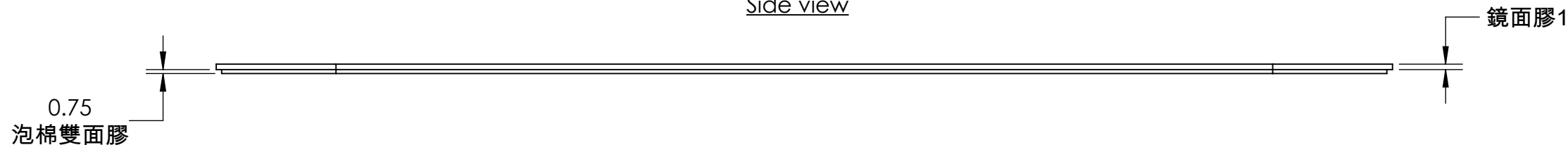


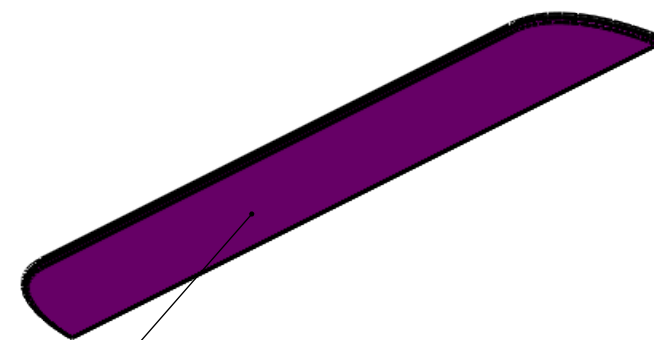
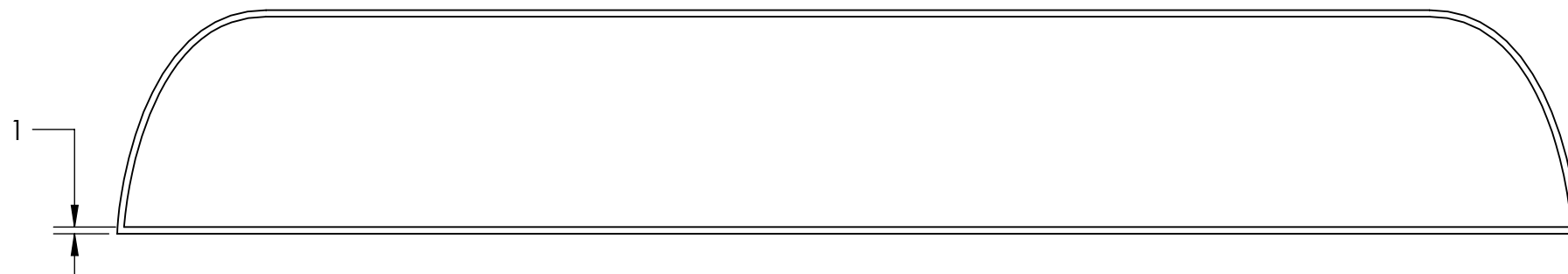
Top view



Side view



Bottom view



0.75mm Double sided foam tape

NOTES:

1. General Tolerance : +/- 0.1 (<100mm) ; +/- 0.3 (100mm < 250mm)
2. Material: PC(polycarbonate) - Mirror Panel 1mm thk with 0.75mm thk double sided foam tape
3. Surface Finish: Fine / as as origin sheet
4. Color/Coating: as origins
5. Dimensions apply to parts after surface finish unless otherwise noted.
6. Part to be clean and free of any contaminants, metal flakes and oil residue.

PRT. NO.	DESCRIPTION	REVISION
	00347 Mirror lip for DE1	R1
UNLESS OTHERWISE SPECIFIED: DIMENSIONS ARE IN mm		PROPRIETARY AND CONFIDENTIAL: THE INFORMATION CONTAINED IN THIS DRAWING IS THE SOLE PROPERTY OF DECENT ESPRESSO ANY REPRODUCTION IN PART OR AS A WHOLE WITHOUT THE WRITTEN PERMISSION OF DECENT ESPRESSO IS PROHIBITED.
LINEAR TOLERANCE: .X = ± 0.3 .XX = ± 0.1		
ANGULAR TOLERANCE: ± 1.0°		
DO NOT SCALE DRAWING		
PRT. FILE NAME 00347 Mirror lip for DE1		
ASME Y14.5-1994	LAST VIEWED DATE 19/03/2021	SCALE 1:1
		SIZE <b>A3</b> SHEET 1 OF 1

